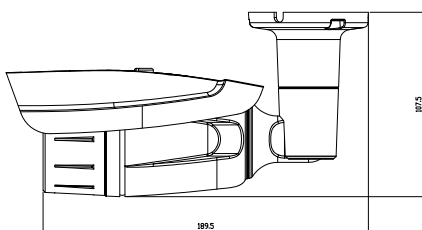
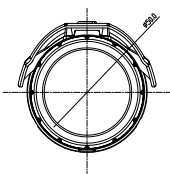


## 2MEGAPIXEL ANALOG HD ALL-IN-ONE CAMERA

# SAU-2AH35IR



### DIMENSION



### FEATURES

- 1/2.8", 2.4 MegaPixel SONY Exmor CMOS
- 1080P | ALL IN ONE (AHD/TVI/CVI/CVBS) Video Output
- Min. Illumination 0.05 Lux / F1.0 | B/W : 0.005 Lux / F1.0 (With IR)
- True Day & Night
- Defog (Visibility enhancement on the low contrast scene)
- 2D & 3D Digital Noise Reduction
- Motion Detection, Privacy Masking (4 Zone)
- IR LED 35pcs
- Fixed Lens 3.6mm
- Option : OSD Controller

### SPECIFICATIONS

SAU-2AH35IR	
Image Sensor	1/2.8", 2.4 MegaPixel SONY Exmor CMOS
Total Pixels	2000(H) X 1241(V) = 2,482,000pixel
Effective Pixels	1984(H) X 1225(V) = 2,430,400pixel
Scanning System	Progressive
Resolution	1080P   ALL IN ONE (AHD/TVI/CVI/CVBS)
Minimum Illumination (F1.0, 30IRE)	Color : 0.5 Lux   BW : 0.5 Lux Color sens-up : 0.05 Lux   BW sens-up : 0.005 Lux
Electronic Shutter Speed	AUTO / FLICKER NTSC : 1/30 ~ 1/50,000sec   PAL : 1/25 ~ 1/50,000sec
S/N Ratio	More than 52db
Backlight Compensation	BLC / HSBC
White Balance	ATW / AWC-SET / INDOOR / OUTDOOR / MANUAL / AWB
2 DNR	CVBS
3 DNR	AHD   TVI   CVI
	OFF / LOW / MIDDLE / HIGH
Day & Night	AUTO / COLOR / B&W / EXT
Sense-up	AUTO(x6) / x2. x4. x6. x8. x10. x15. x20. x25. x30
D-WDR	OFF / ON
Motion Detection Privacy Masking	OFF / ON (4 Points)
Defog	OFF / ON
D - EFFECT	OFF / MIRROR / V-FLIP / ROTATE & FREEZE
Language	English / Chinese / Japanese
LENS	Fixed Lens 3.6mm
Power Supply	DC 12V ±30%
Power Consumption	LED Off : Max 1.2W   LED On : Max. 5.5W
Operating Temperature	-10°C ~ +50°C
Operating Humidity	Less than 90%
Dimension	73.7(W) x 107.5(H) x 189.5(D)mm
Weight	Approx. 450g (W/ Sunsheld & Bracket)

\* In accordance with customers' request and OSD controller's option, the specifications can be fixed or changed without notice.